

A TASTE OF...



innof



Inno, since 1975.

Be inspired by the Inno collection, a mixture of proven classics and fresh novelties.

The aim of the collection is to provide architects and interior designers different looking and useful interior objects as tools for modern interiors.

A taste of... Inno is a teaser to give an idea of our collection. More information in separate brochures, catalogues and our webpage.



Harri Korhonen, Interior architect



Jouni Leino, Interior architect



Ari Kanerva, Designer



Arto Riimala, Interior architect



Mikko Laakkonen, Designer



Teppo Asikainen, Designer



Tomi Kapiainen, Designer



Timo Vierros, Designer





**K**ola is aesthetically and weight wise a light family of chairs making it fit both public and private modern interiors. The seat, manufactured of 100% recyclable polyester felt, is part of the supporting construction. It has also great acoustic absorption capacities. The felt seat can be renewed which gives the chair a longer life cycle and, accordingly, it leaves a smaller ecological footprint. The upholstered cushion gives extra comfort and allows the use of playful colours. The Kola chairs are fire resistant and easy to clean.

The Kola family includes an easy chair, a rocking chair, a meeting or dining chair with different leg options and a stacking small chair with or without armrests, or with a crossleg for meeting applications.

Kola has been awarded with red dot award: product design 2012, Fennia Prize 2012 and Good Design Award 2010.

Design: Mikko Laakkonen



KOLA LOUNGE



KOLA LIGHT



KOLA ROCKING CHAIR + CUSHION



# KOLA

KOLA ROCKING CHAIR







KOLA STACK RA + CUSHION



KOLA STACK ZA



KOLA





THE DESIGNER AND KOLA LOUNGE



KOLA STACK ZA

KOLA

**GOOD DESIGN AWARD** The Chicago Athenaeum 2010

**RED DOT DESIGN AWARD WINNER** 2012

**FENNIA PRIZE** 2012



reddot design award  
winner 2012



**fenniaprize 12**  
good design grows global  
HONORARY MENTION



KOLA STACK B, PERFORATED



KOLA STACK A



KOLA LOUNGE

KOLA



KOLA LIGHT WOOD



KOLA ROCKING CHAIR + CUSHION

KOLA







# AURA

# A

Aura is a harmonious and cozy 2-seater sofa, it surrounds you and is perfect for creating peaceful interiors. Due to its high back the tempting and sympathetic Aura also works as a divider. The disclosed structure gives Aura a characteristic identity.

Design: Mikko Laakkonen



# A

Aura sofa is accompanied with a sympathetic lounge chair. Mix the sofa and the chair together to form harmonious and cozy Aura groups or use the chair separately to form lower sitting groups. Also to be used as a side chair. The back of the Aura chair is slightly lower allowing more visibility.

Design- Mikko Laakkonen





**AURA**

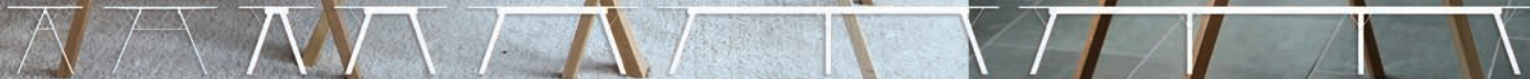


Lab table and chair for casual meetings and cozy dining!

"We are happy to create something different and we're expected to do so.

It was challenging and pleasant to enter into a new kind of a conference environment, one where casualness is emphasized instead of representative look. To use wood as material felt natural in the current spirit as it's considered warm and positive. We still added a quilted loose cushion to strengthen the cozy effect. I was particularly satisfied that we managed to make a chair as comfortable as Lab to be vertically stackable."

Design: Harri Korhonen





Lab table is a casual meeting or dining table, available as an individual or a modular version that can be extended endlessly.

Design: Harri Korhonen



Intro is a stackable wooden chair for use in a variety of public and private spaces. At first sight Intro looks simple but it is designed with a lot of attention to detail. The unique design combined with ergonomic proportions make it suitable for use in different purposes alone, in a group or around a table. Available with an upholstered seat and/or back.

Design: Ari Kanerva







INTRO A3



INTRO A2



INTRO A1





C.D. Medium is a new stackable wooden chair in the timeless C.D. family.

Design: Harri Korhonen





C.D. MEDIUM









LANA

Lana is a modular sofa system which includes elements from a 1 to 3-seater bench, divan or sofa to a side table. The elements can be connected to each other to form different groups as well as used as a single armchair, bench, sofa, divan or a table. A corner part is also available.

Design: Mikko Laakkonen



BONDO D-2, D-3 AND D-4





BONDO I-3



BONDO TABLE



BONDO I-4

Free form, solid, smooth, rounded, peaceful... From earlier lighter Bondo versions Bondo D is the new totally upholstered basic module for Bondo – the universally applicable lounge element for public and semipublic waiting areas. The range of compositions may vary from a bench or divan to a 2-seater sofa, thanks to the different shapes of the back elements. Bondo can be combined into different setups or lines or used as single seats. Design: Harri Korhonen.



BONDO D-3



P

Propel is a simple coat rack with a playful spirit. Its innovative structure and wooden hooks combined with fresh colours make it a much anticipated novelty.

Design: Harri Korhonen



PROPEL



Design: Tomi Kapiainen



JR. WOOD 403



JR. WOOD 404



JR. WOOD 407



JR. WOOD 402







**BASSO**









BASSO S



BASSO M xa



BASSO L xb



BASSO XL zb

# BASSO

# B

Basso is a streamlined chair with remarkable sitting comfort. Basso creates discreet reliability and even playful ambiance particularly in meeting rooms. It has a lumbar support embedded in the streamlined profile. The upholstered armrest protects the edge of the table top.

Basso is available in four sizes. M, L and XL comes with a 4-star cross leg (X) or a 5-star cross leg with wheels and gaslift (Z). Optional armrest. Basso S is a stackable small chair.

Design: Harri Korhonen



# S

Select is a balanced and comprehensive design furniture collection for hotels, lounges, conference rooms to auditoriums, dining rooms, cafeterias, classrooms etc. The distinct form and numerous material and leg options offer complete freedom to create different furnishings for interiors. The shape of Select gives a hint of comfort and Select fulfills that commitment. For a creative mind Select works as a perfect tool. That's why we've kept the shape simple and the versions versatile. Select yours.

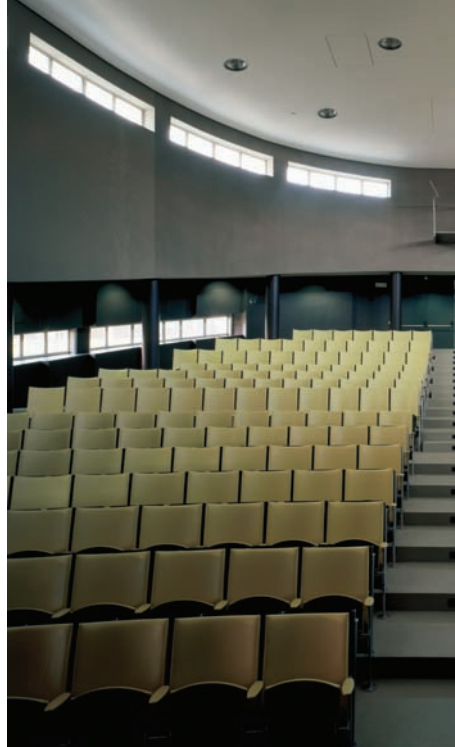
Design: Harri Korhonen 2001-







SELECT







MIO



SESSIO

Inno has a wide variety of different auditorium chairs for different looking interiors.



SELECTUM

AUDITORIUMS

# OSCAR



Oscar is one of Inno's best sellers and on its way to become a design classic. The popularity is based on its sympathetic character. Oscar is a tempting chair! Just have a look at it and you want to try it. The sitting comfort is remarkably good due to the spring effect of the backrest. A lot of tension is created between the light and structural backrest and the lumpy, yet friendly seat. Design: Harri Korhonen.

Oscar is a good example of a typical evergreen Inno chair, where a timeless design combined with high quality reduces the ecological footprint. 🌱



OSCAR A1





Case magazine/brochure holders are available as wall mounted and as freestanding. In Case, form follows function: The minimal, stylish design gives the products a strong architectural impression. The similarities in form language and design of the Ad Case versions are easily recognized, but compared to the magazine holders, there is a big difference in use. The main focus in the brochure holders is to keep a maximum area of the brochures visible, giving out as much information as possible. The main idea behind the magazine holders is on the other hand to hide as much as possible of the restless front covers making interiors look more peaceful. Like the magazine holders, the brochure holders should also be seen as a part of the surrounding architecture. Case looks good in single units or in bigger dynamic groups. Design: Mikko Laakkonen.

FLOOR AD CASE



FLOOR CASE



WALL CASE



AD CASE





STRAP-IT



Easy assembly without tools



Design: Arto Riimala

STRAP-IT



TAKIT DOUBLE



TAKIT II



TAKIT I



# T

Takit is a modular coat rack/space divider equipped with six coat hooks and a shelf. The coat rack comes in elements of one meter or built into a longer row. Optional backboard in Takit II or diagonal steel wires in Takit I. Takit Double is a two-sided model in the Takit family. Takit R, a coat hanger, is also available.


Design: Jouni Leino



TAKIT R







In-tensive is a forerunner of modular electrified meeting tables. First introduced back in 1998 in Nokia Research Center In-tensive has proven useful in meeting rooms all over the world. The modular structure, table tops in different shapes, sizes and materials and a large variety of leg versions make In-tensive suit both modern and classical interiors. All In-tensive tables have a spacious cable tray for easy cable management and different connections. For total range see separate brochure.

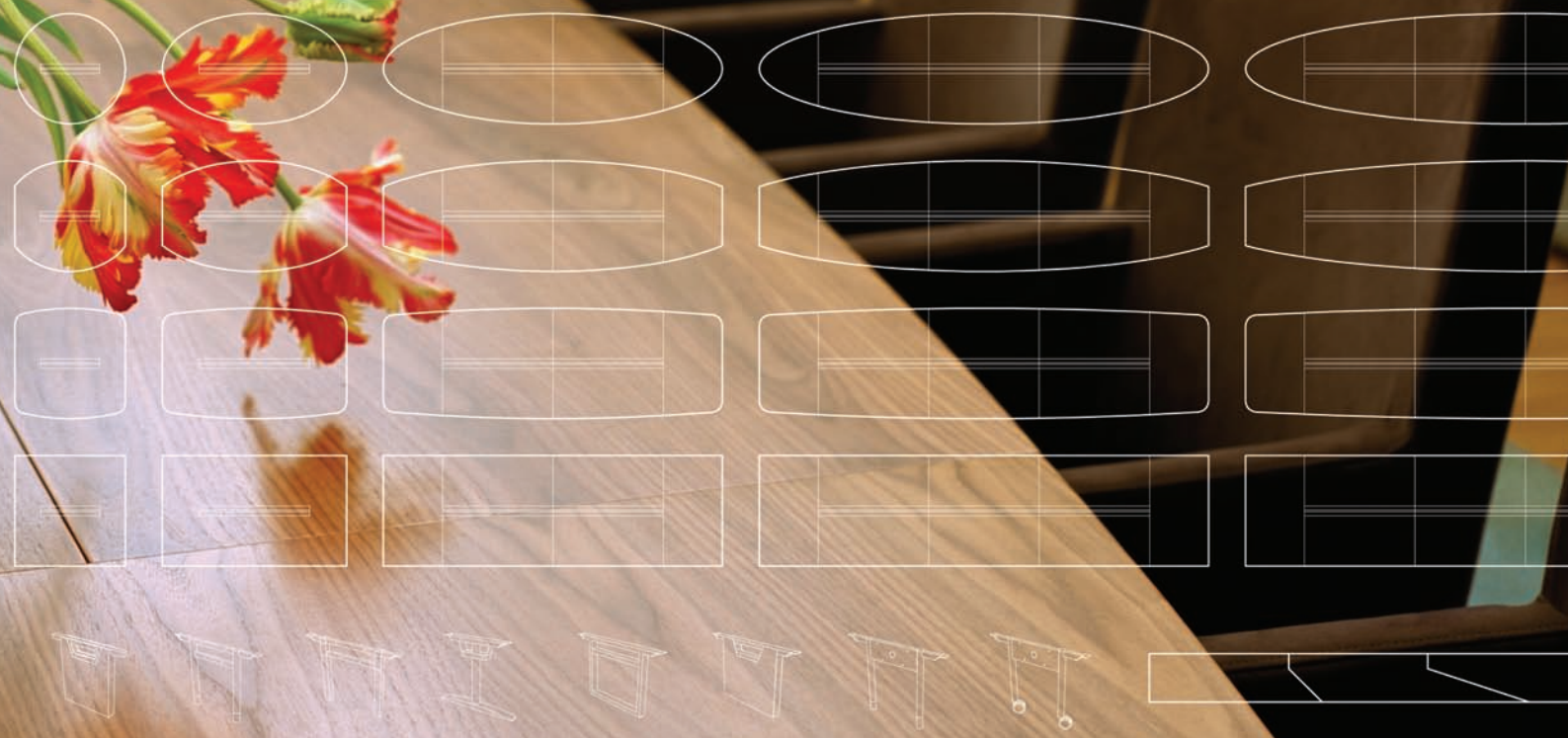
Design: Jouni Leino

IN-TENSIVE





**IN-TENSIVE**





**IN-TENSIVE**









Oka comes in three versions: hanging, free standing and as a wall attached coat rack. Oka A hangs from the ceiling in a steel wire, doesn't take floorspace and makes cleaning much easier. It's equipped with 6 hooks and a height adjustment mechanism. The free standing coat rack Oka B is equipped with 6 hooks. The wall attached Oka C coat rack is available with either 3 or 5 hooks. Because of the very small width, there is a good possibility to use Oka C in narrow areas like on pillars. It also works in larger rows.

Design: Teppo Asikainen

OKA A, ceiling hung coat rack



OKA B



OKA C3



OKA C5

OKA



T

Tripla is a coat rack where shape meets function. The same crown is used in three different ways: in a triple leg or single leg free standing coat rack and as a wall attached hook. In the free standing versions you may use the crown for hanging and even store small items like keys, mobile phones etc. Attached to the wall it can be used simply as a hook or with a coat hanger.

Design: Harri Korhonen



TRIPLA C



TRIPLA 3



TRIPLA 1



TRIPLA



# B

Box is a modular sofa available in 1-, 2- or 3-seater elements. Possibility to add arms and backrest. The elements are connectable.

Design: Harri Korhonen



# BOX







# FORM



Design: Tomi Kapiainen

# JR.



JR. 404



JR. 402



JR. 403



JR. 407



JR. 405



JR. 404

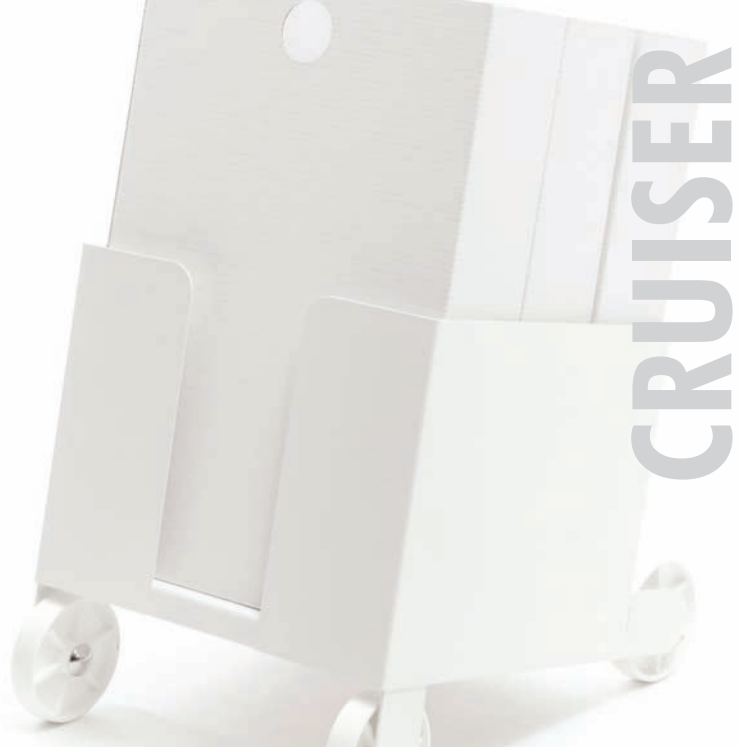




CRUISER 1998

Cruiser is a user friendly waste separation system for recycling office papers. It was designed and developed in co-operation with end users, first introduced in 1998. The popular Cruiser was followed by a new version in 2011, available in black or white colour.

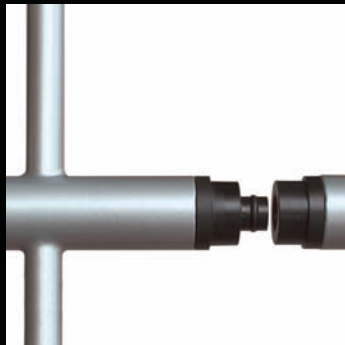
Design: Harri Korhonen







Design: Harri Korhonen





T

Two Step is a multifunctional coat rack for all kinds of public environments. Two Step is lightweight and very well stackable, making it perfect even for temporary use. Easily connected to each other, 12 hooks and four pegs for hats and can be used with coat hangers too.

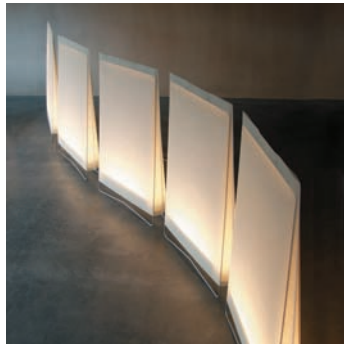
Design: Valvomo/Timo Vierros



TWO STEP



CHILL OUT



Chill Out: A personal looking floor lamp with two functions, a lamp and a space divider. Design: Tomi Kapiainen & Jari Peltonen

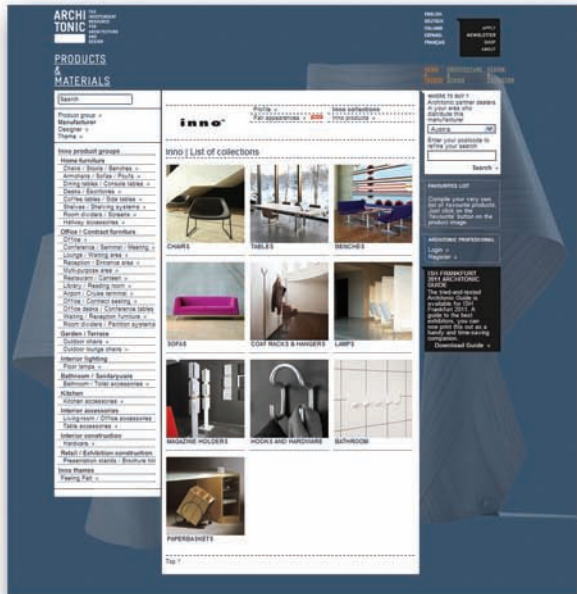






Inno.fi for more information about us and the designers we are working with. Find out more about our products, materials and dimensions, high resolution press photos, brochures, cad files, product news, events, references and distributors near you. [www.inno.fi](http://www.inno.fi).

You can also find us at Architonic - the independent resource for architecture and design.





A lush green field with two blue chairs in the background. The chairs are positioned in the middle ground, one slightly to the left of the other. The field is filled with dense, vibrant green plants, possibly a type of clover or similar ground cover. In the background, there is a dense line of trees and bushes, creating a natural, outdoor setting. The overall scene is bright and sunny, with a clear focus on the greenery and the chairs.

ī n n o<sup>™</sup>

INNO INTERIOR OY/INNO-TUOTE OY TÄHDENLENNONTIE 9 02240 ESPOO FINLAND [www.inno.fi](http://www.inno.fi) [info@inno.fi](mailto:info@inno.fi) T. +358 9 8870380 F. +358 9 88703833