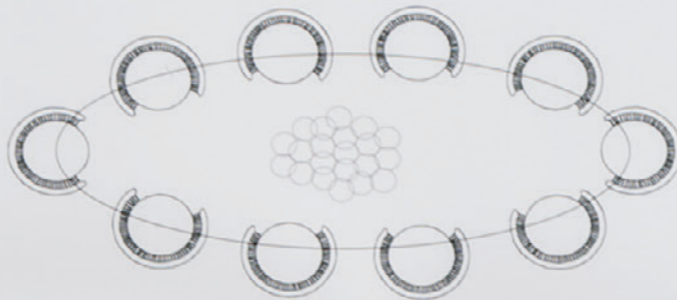


# fabrics



dining area  
37,5m<sup>2</sup>



CLASSIC

POP

FOLIAGE

lounge  
76

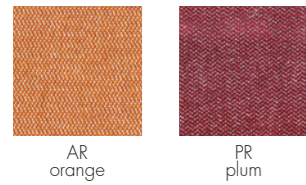




# TREND FABRICS

## MONO

### Betty (upholstery)



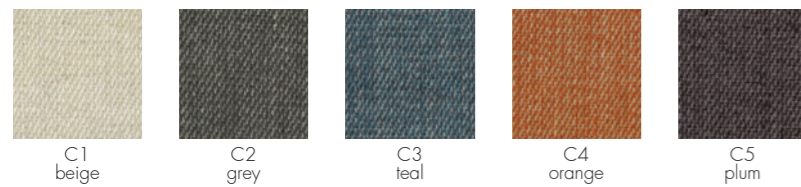
Composition 80% CO, 12% PC, 8% AF

Martindale 28.000



## MELANGE

### Betty (cushions)



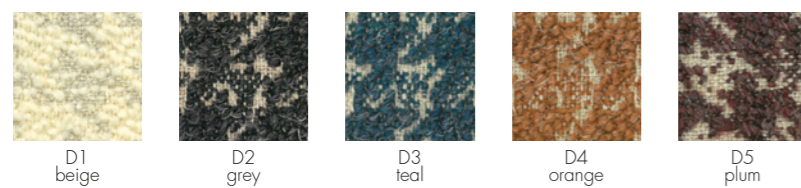
Composition 39% VI, 24% PC, 19% CO, 13% PL, 5% LI

Martindale 30.000



## JACQUARD

### Betty (cushions)



Composition 40% WO, 20% VI, 15% CO, 10% PL, 10% LI, 5% PC

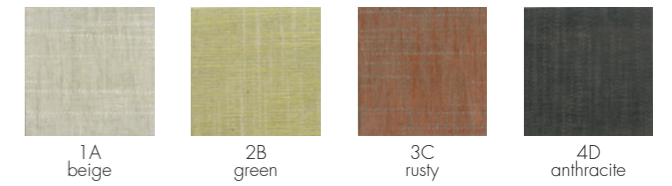
Martindale 40.000



# TREND FABRICS

## SOLID

### Cara



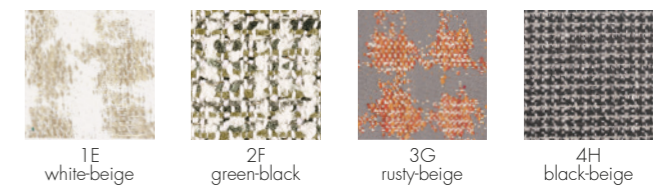
Composition 62% VI, 22% CO, 11% LI, 5% PL

Martindale 30.000



## FANCY

### Cara



1E white-beige - 3G rusty-beige

Composition 44% CO, 27% VI, 22% PL, 6% LI, 1% SE

Martindale 30.000



4H black-beige

Composition 38% VI, 30% CO, 20% PL, 12% LI

Martindale 25.000



2F green-black

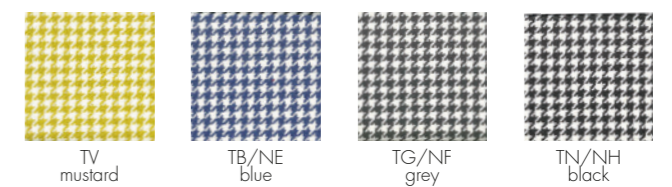
Composition 32% CO, 50% VI, 7% LI, 3% WO, 8% PC

Martindale 20.000



## PIED DE POULE

### Largo/Clap



Composition 49% LI, 38% CO, 13% VI

Martindale 35.000





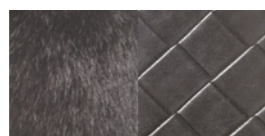
# TREND FABRICS

## KRAVITZ

### Mademoiselle Kravitz



07  
faux-fur - snake print fabric



09  
faux-fur - woven fabric



81  
raffia fabric - woven fabric

#### 07 faux-fur - snake print fabric

Composition 100% MA - 62% VI, 30% CO, 8% PL

#### 09 faux-fur - woven fabric

Composition 100% MA - 42% VI, 40% CO, 18% WO

#### 81 raffia fabric - woven fabric

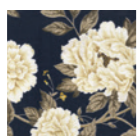
Composition 100% PVC - 42% VI, 40% CO, 18% WO

## SANDERSON

### Largo



V1  
chelsea



V2  
peony



V3  
kew

Composition 60% LI, 30% CO, 10% NY

Martindale 40.000



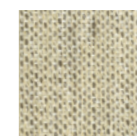
# TREND FABRICS

## MATCH

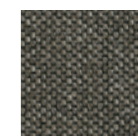
### Largo



G1  
ecru



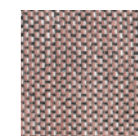
G2  
sand



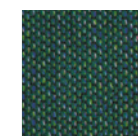
G3  
dove grey



G4  
dark grey



G5  
pink



G6  
green

Composition 48% CO, 15% VI, 7% LI, 30% PL

Martindale 52.000

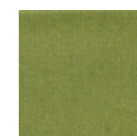


## VELVET

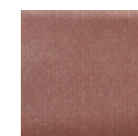
### Largo/Foliage



50/0  
dove grey



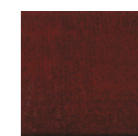
51/1  
acid green



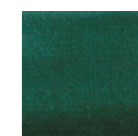
52/2  
pink



53/3  
teal



54/4  
cardinal red



55/5  
forest green

Composition 100% CO

Martindale 50.000



## PATTERN

### Mademoiselle



PB  
white pattern



PN  
black pattern



PP  
pied de poule



DV  
green damask

DV

Composition 100% CO/PL

PB - PN - PP

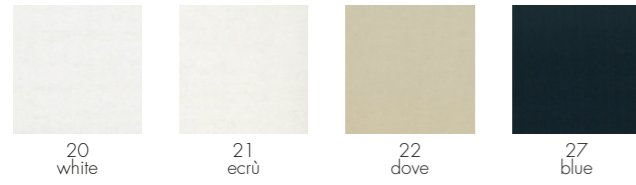
Composition 100% CO



# OUTDOOR FABRICS

## SUNBRELLA®

### Pop Outdoor



Composition 100% PC

Martindale 15.000/25.000



## IKON

### Pop Outdoor



Composition 84% PP, 16% PL

Martindale 35.000



# OUTDOOR FABRICS

## DYED FIBER

### Pop Outdoor



Composition 100% PC (solution dyed acrylic)

Martindale 20.000



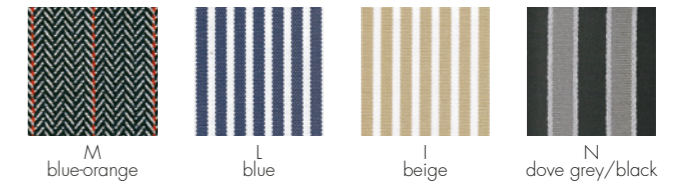
69 blue-orange

Martindale 30.000



## DYED FIBER

### Cara Outdoor



Composition 100% PC (solution dyed acrylic)

Martindale 20.000



M blue-orange

Martindale 30.000



Colour fast to light 7/8    Water repellent    Oil repellent    Mould resistant    Soil resistant



# À LA MODE FABRICS

## EMILIO PUCCI

### Madame



PA  
Paris



NY  
New York



SH  
Shanghai



RO  
Rome



MI  
Milan

Composition 100% PES

Martindale 60.000



# À LA MODE FABRICS

## MISSONI

### Pop/Mademoiselle



ZZ  
vevey  
burnt tones



QQ  
vevey red tones



LL  
cartagena B/W

Composition 100% CO

Martindale 25.000



## MOSCHINO

### Mademoiselle



FM  
sketches



MM  
daisies



HN  
black hearts

Composition 100% CO

Martindale 39.000





# MEMPHIS FABRICS

design Ettore Sottsass, Nathalie Du Pasquier

## LETRASET

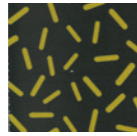
Mademoiselle/Trix



A1  
yellow



A2  
fuchsia



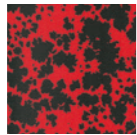
A3  
black

## SCHIZZO

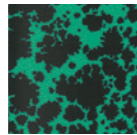
Mademoiselle



A4  
blue



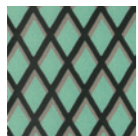
A5  
red



A6  
green

## RETE

Mademoiselle



A7  
turquoise



A8  
beige



A9  
green

## Largo



A8  
beige

## BURUNDI/CAMEROON

Mademoiselle



UU  
light blue



UZ  
pink



UY  
cameroon

Composition 100% PES

Martindale 60.000



# LA DOUBLEJ FABRICS

## FLOWERS

Clap/Cushions



B/BB  
ninfea



D/DD  
picnic

Madame/Cushions



H/HL  
lilium

Trix/Cushions



HH/HT  
tulipani

## GEOMETRIC

Clap/Cushions



C/CC  
olive



A/AA  
geometrico

Madame/Cushions



F/FF  
ruote

## BIRDS

Madame/Cushions



G/GG  
galletti



E/EE  
uccellini

Composition 100% PES

Martindale 60.000

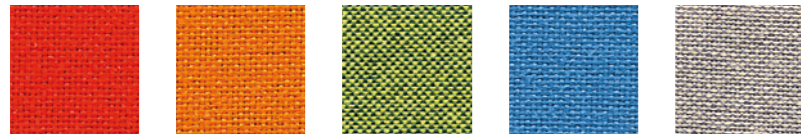




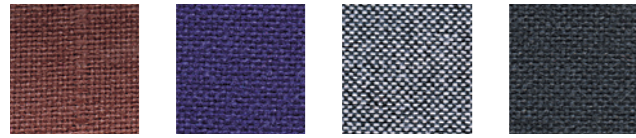
# CLASSIC FABRICS

## TREVIRA

### Audrey Soft/Maui Soft



G/GG red E/EE orange S/SS acid green R/RR teal D/DD beige



M/MM brown P/PP blue C/CC grey B/BB black

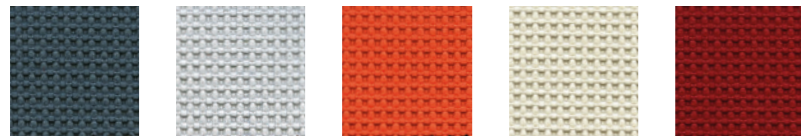
Composition 100% PL Trevira

Martindale 65.000

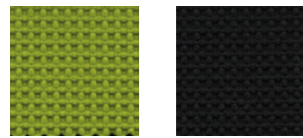


## TREVIRA

### Clap



2 dark grey 3 light grey 4 orange 5 beige 6 red



7 green 8 black

Composition 100% PL Trevira

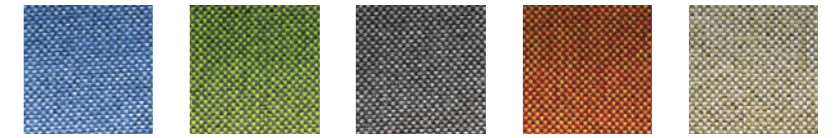
Martindale 50.000



# CLASSIC FABRICS

## TREVIRA

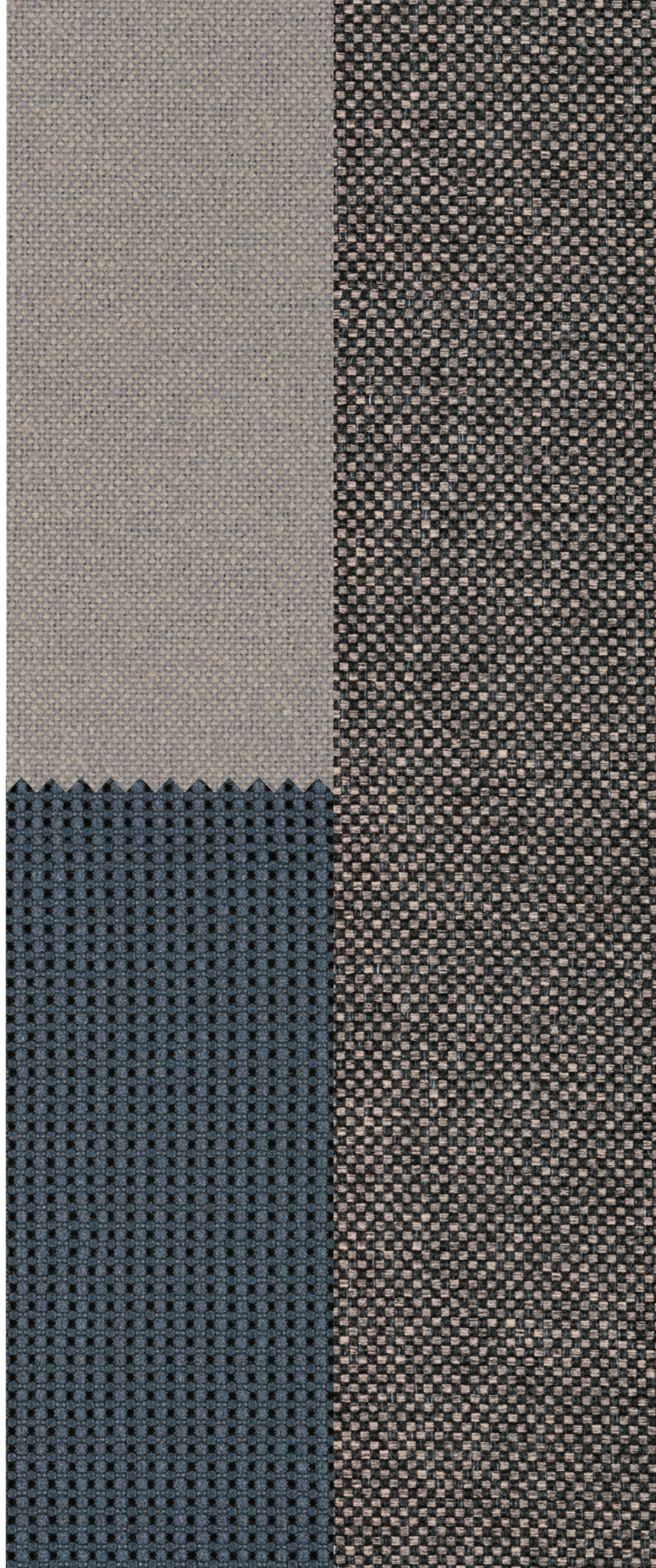
### Foliage



E blue D green C grey B orange A beige

Composition 100% PL Trevira

Martindale 75.000





# CLASSIC FABRICS

## KVADRAT

### Maui Soft



GG red EE orange SS acid green FF fuchsia DD beige



CC grey PP blue BB black

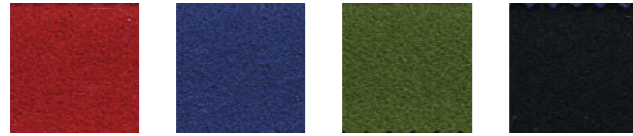
Composition 100% WO

Martindale 45.000

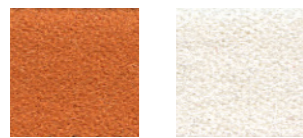


## CLOTH

### Foliage



L red N blue M green P black



G orange F white

Composition 100% WO

Martindale 50.000



# CLASSIC FABRICS

## COTONE

### Pop/Pop fire tested



43 red 40 orange 46 ochre 47 green 45 ecru



41 white 48 blue 44 grey

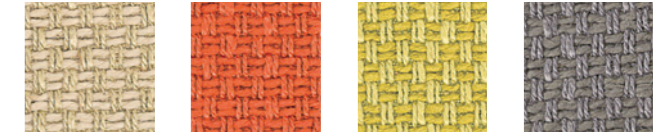
Composition 100% CO

Martindale 30.000

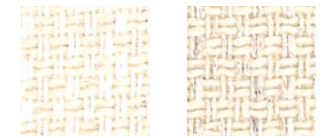


## NILO

### Largo/Pop Duo/Plastics Duo



72 dove 73 orange 74 green 75 grey



70 white 71 ecru

Composition 46% CO, 45% VI, 8% LI, 1% SE

Martindale 20.000





# CLASSIC FABRICS

## REGULAR

### Madame



1 grey 2 beige

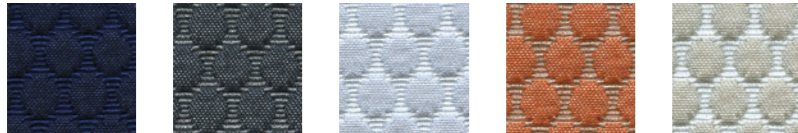
Composition 65% VI, 30% PL, 5% CO

Martindale 50.000



## EMBOSSED

### Clap



1 blue 2 graphite 3 grey 4 orange 5 beige

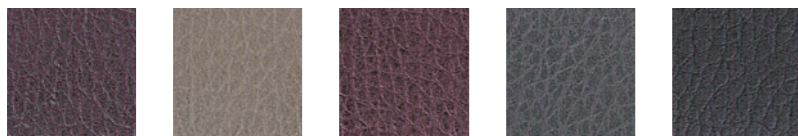
Composition 100% PL

Martindale 25.000

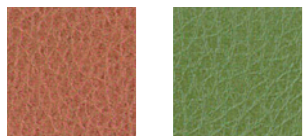


## ECO LEATHER

### Clap/Madame



P/3 plum T/4 dove grey M/5 brown G/6 dark grey N/7 black



L/8 tobacco V/9 green

Composition 84% PVC, 16% CO

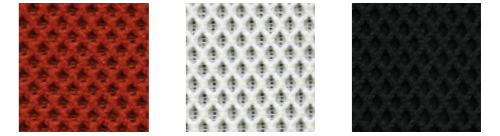
Martindale 75.000



# TECHNICAL FABRICS

## NEST

### Trix



02 orange 03 white 09 slate

Composition 100% PL

Martindale 30.000



## PLAIN

### Plastics



02 orange 03 white 09 black

Composition 66% PU, 34% CO

Martindale 150.000